



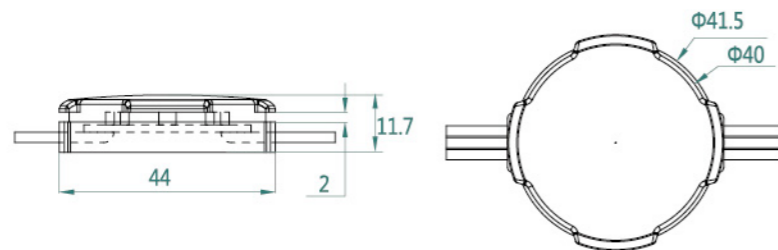
欧格二次封装Φ40LED像素灯

OUGE Double Protection Φ40LED Pixel Lights



产品尺寸图 Product Size

(单位:mm)



产品用途 Product Application

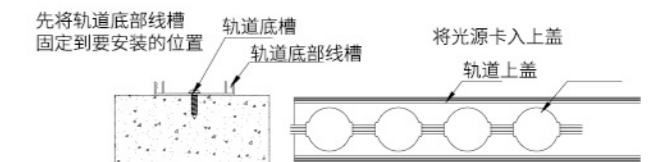
- 用于楼体、桥梁等大型建筑物的轮廓勾勒
- 制作多栋楼宇立面媒体屏联动的大型城市景观项目
- 制作大型户外广告显示屏、透明广告显示屏
- 制作户外标识和穿孔发光字LED光源
- 用于户外、地下、水下、公园等景观照明
- To draw the contour of the buildings and bridges.
- To achieve synchronization of multi-building media facade screen for large-scale urban landscape projects.
- To produce large outdoor advertising screen, transparent advertising screen.
- To fabricate outdoor logo and perforated LED character light source.
- For outdoor, underground, underwater, parks and other landscape lighting.

灯具参数 Lighting Parameters

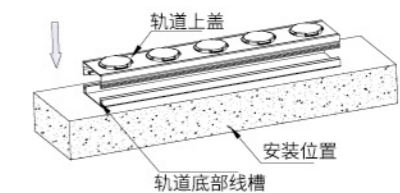
产品型号 Product model	OG-XSY-40	防护等级 Protect grade	IP68
发光角度 Beam angle	110°	外壳阻燃性 Outer shell fireproof grade	V-0
LED颜色 LED color	RGBW、RGB或各种单色、双色 RGBW, RGB or a variety of monochrome two-color	抗UV等级 UV resistance level	4-5
工作电压 Voltage	12V、24V	盐雾测试 Salt spray test	抗盐雾/Anti-Salt spray
功率 Power	0.72W、1.44W、1.92W	抗冲击 Impact resistance	IK10
控制方式 Control method	常亮、串行、DMX512/Normally on, SPI, DMX512	电气安全等级 Electrical safety class	III类/III class
重量 Weight	27g	安全认证 Safety certificate	CE; FCC; SASO
灯珠封装方式 Lamp bead assembly way	3528、3535、5050	环境温度 Environment temperature	-40°C~55°C
可选配件 Optional accessories	轨道、铝板、钢丝网、球形罩 Track, aluminum plate, steel wire mesh, spherical shape dome	光源平均寿命 Average lifespan	50000小时/50000 hours

安装方式 Installation method

将该像素灯卡入开孔直径为40.5mm的孔内, 开孔板厚度不超过2mm
The pixel was inserted into a hole with an opening diameter of 40.5 mm. The thickness of perforated plate shall not be more than 2mm



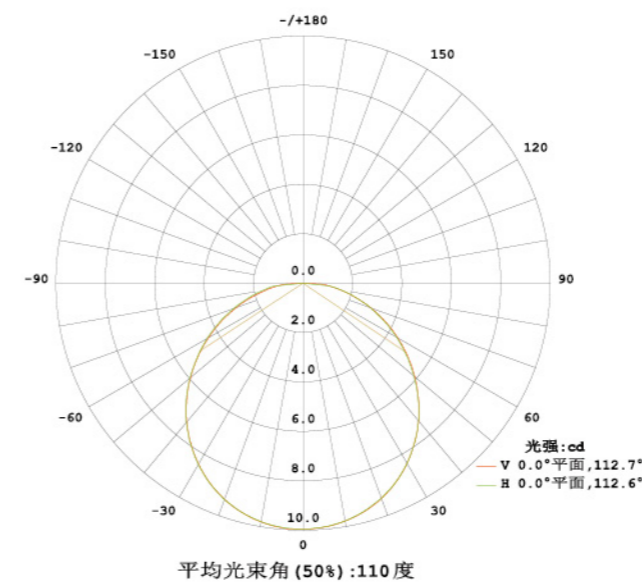
将卡好的光源的轨道上盖, 卡入预先装好的轨道底部线槽



其它安装方式/other Installation Methods

- 安装方式1: 用3M胶粘贴
- 安装方式2: 用底板安装
- 安装方式3: 用钢丝绳或钢丝网安装
- Installation method 1: Use 3M adhesive tape
- Installation method 2: Mounted by aluminum baseboard
- Installation method 3: Using a wire rope or wire mesh installation

配光曲线 Light Distribution Curve



注: 该图为全彩RGB的配光曲线, 其它颜色请扫左上角二维码查询。